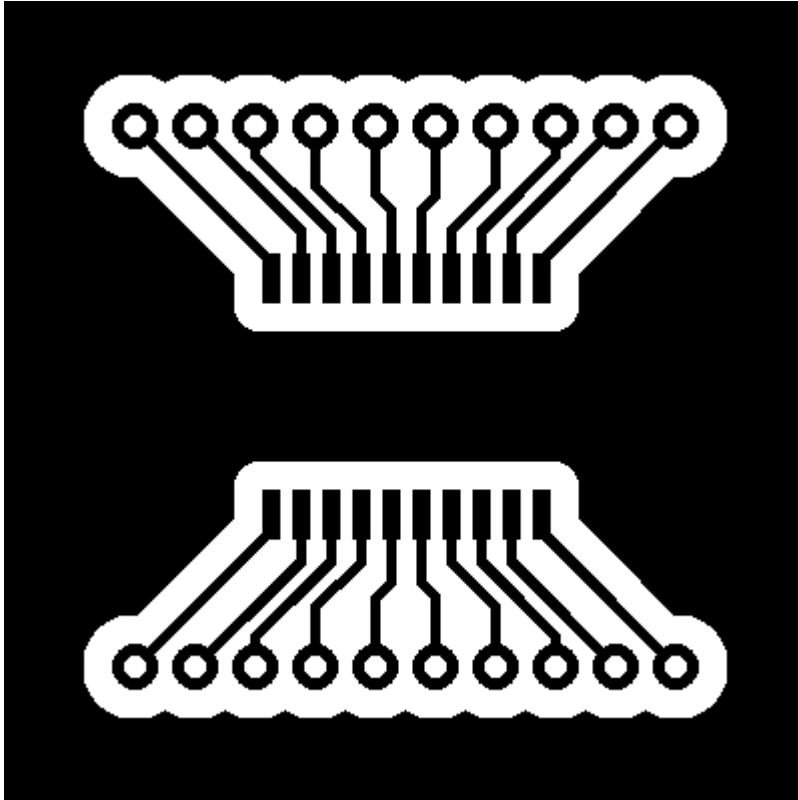


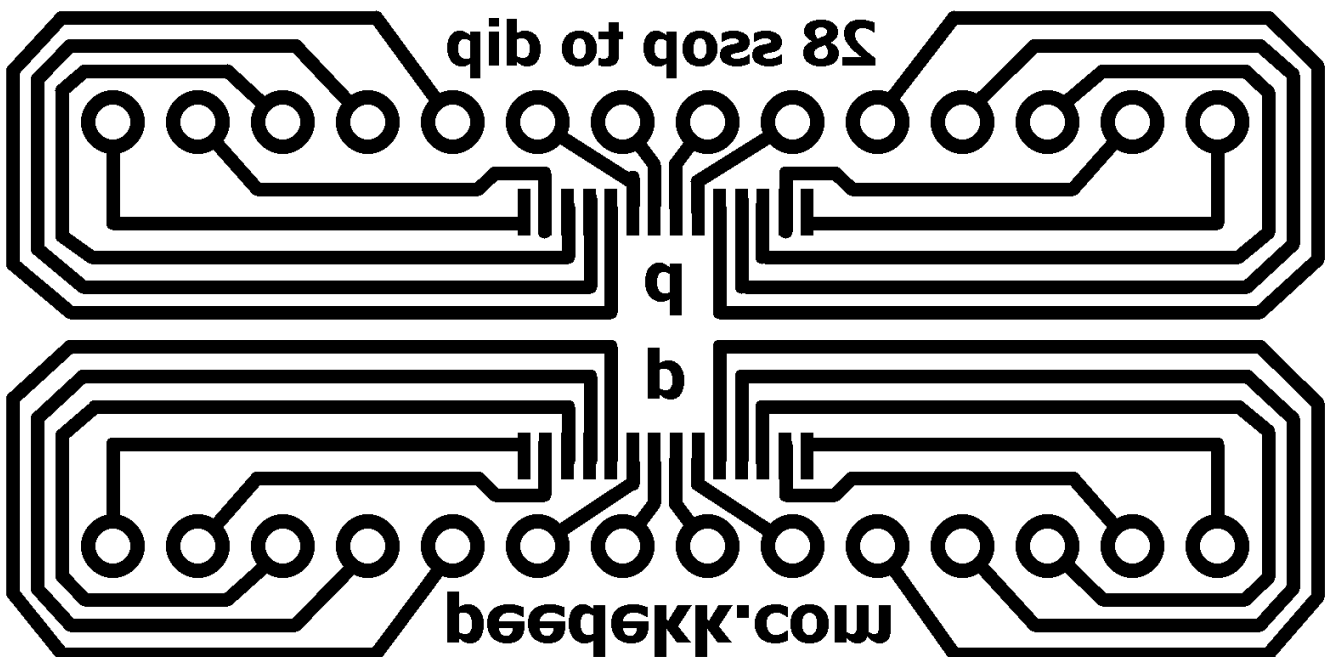
# SMD Breakout Boards

- <http://hackaday.com/2010/04/29/surface-mount-breakout-boards/>
- [http://www.mikrocontroller.net/articles/SMD\\_2\\_Steckbrett\\_Adapter](http://www.mikrocontroller.net/articles/SMD_2_Steckbrett_Adapter)
- [http://www.imajeenyus.com/electronics/20110805\\_smd\\_adapter\\_boards/index.shtml](http://www.imajeenyus.com/electronics/20110805_smd_adapter_boards/index.shtml)
- <http://www.thingiverse.com/thing:1904>

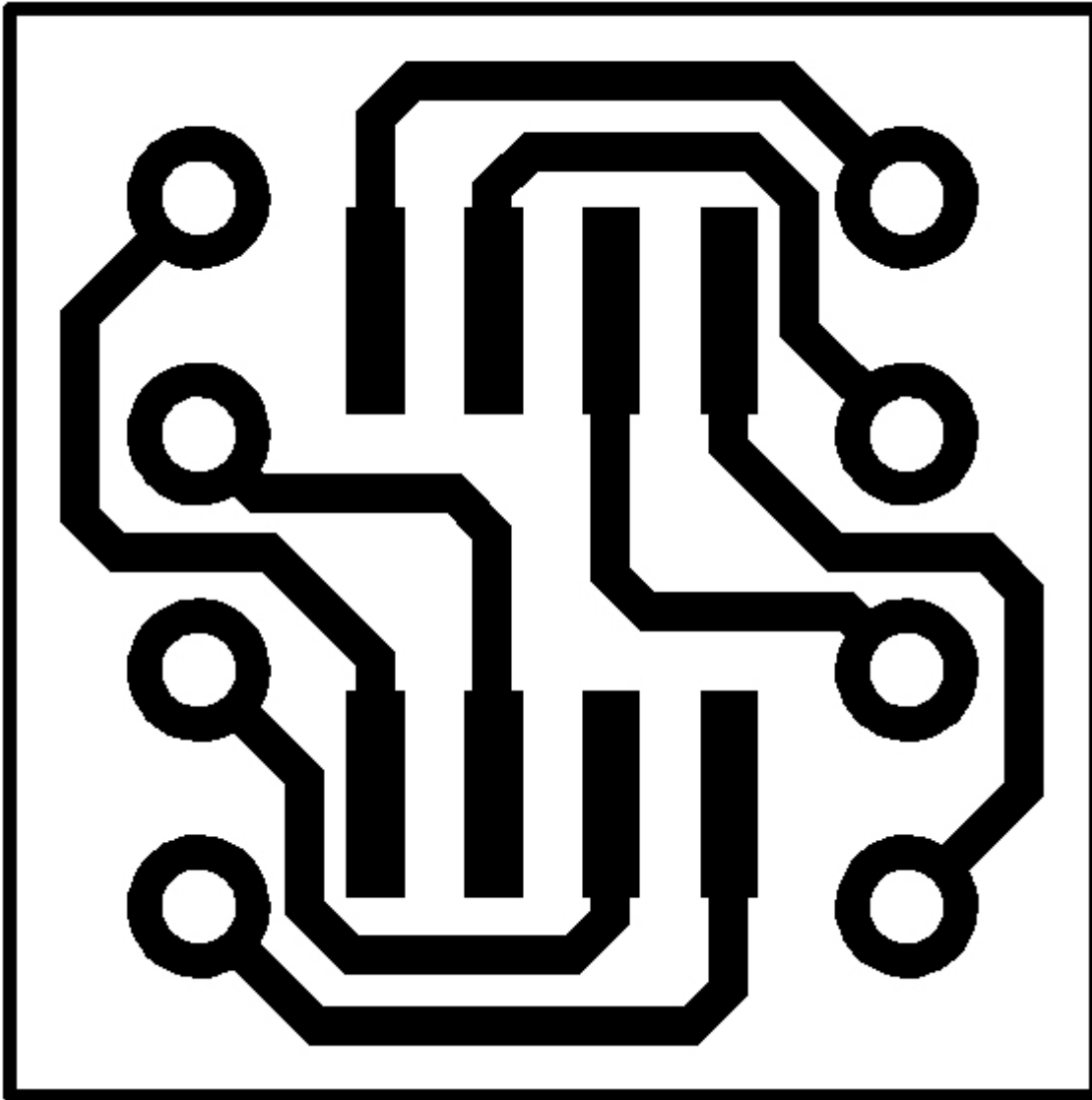
20-PIN SOIC to DIP



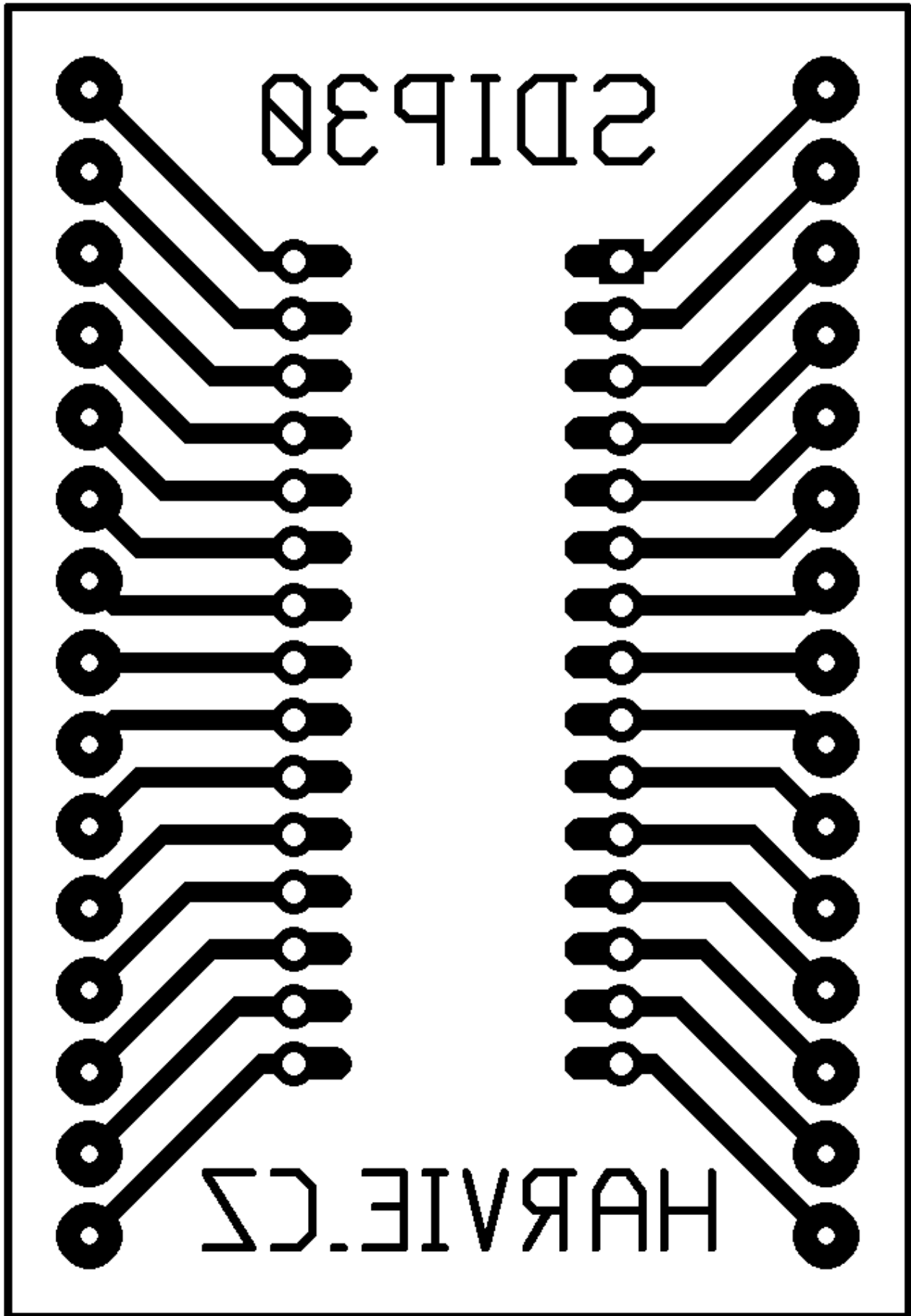
28-pin SSOP to DIP [Thanks Paul Dekker]



SOIC8 (1200dpi)



SDIP30 to 100 mil



From:

<https://wiki.spoje.net/> - **SPOJE.NET**

Permanent link:

[https://wiki.spoje.net/doku.php/howto/electro/smd\\_breakout\\_boards](https://wiki.spoje.net/doku.php/howto/electro/smd_breakout_boards)

Last update: **2015/06/07 16:53**

