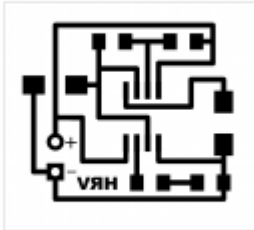


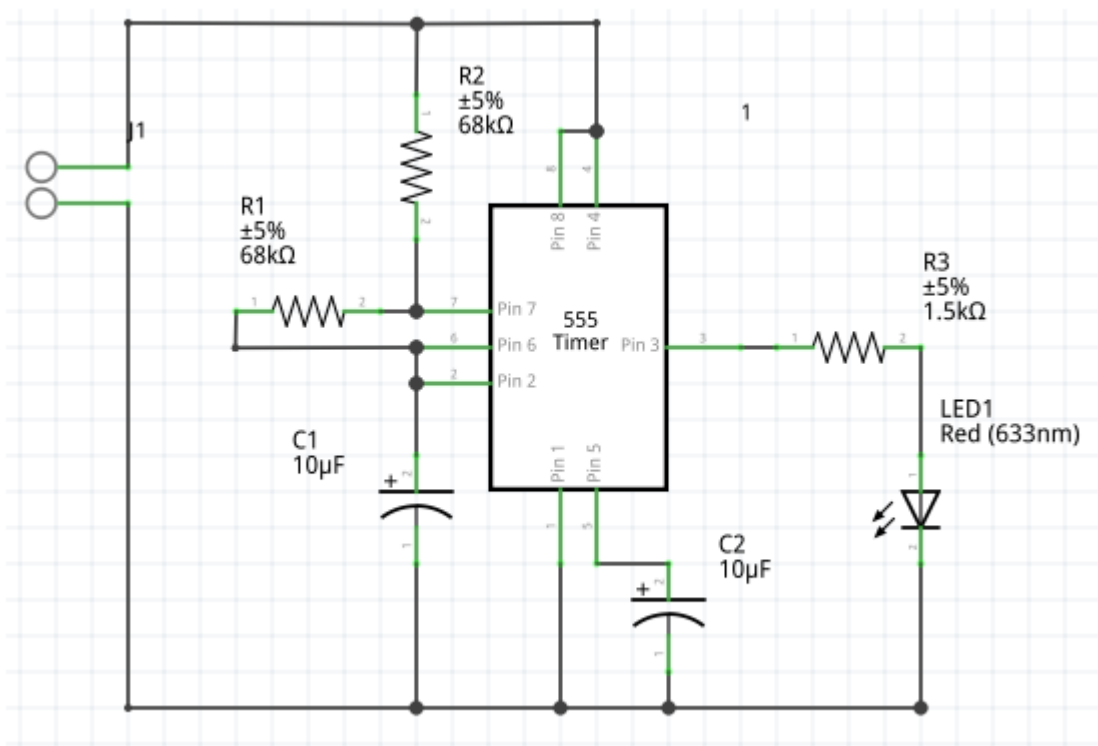
# SMD for Beginners

Here is mirrored 1200dpi PCB template for simple SMD 555 led flasher ready for toner transfer:

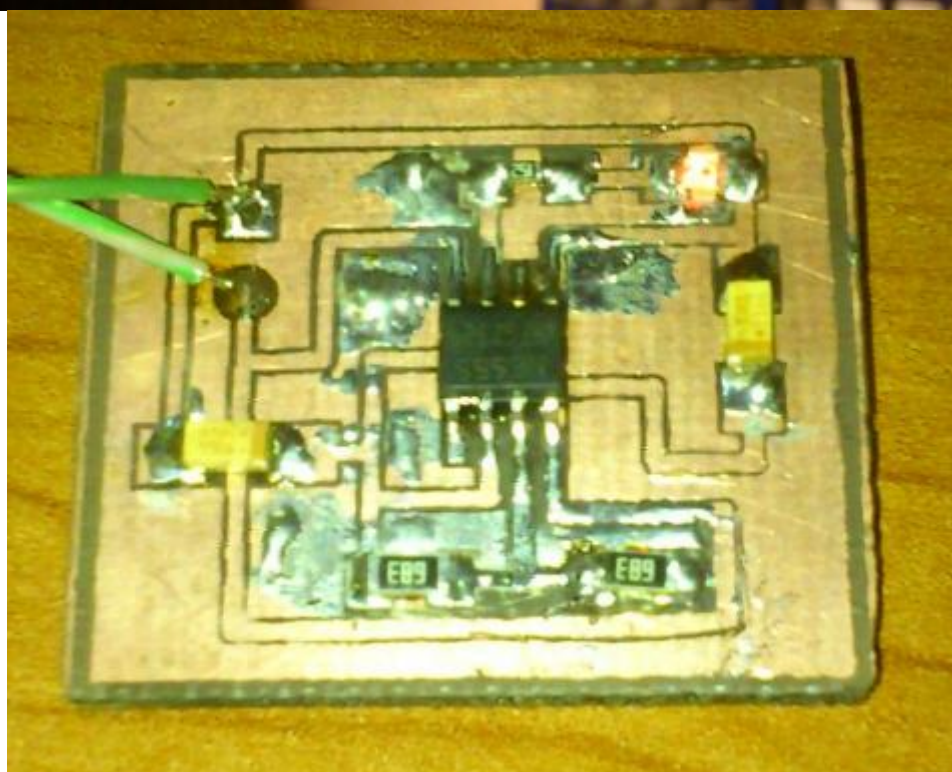
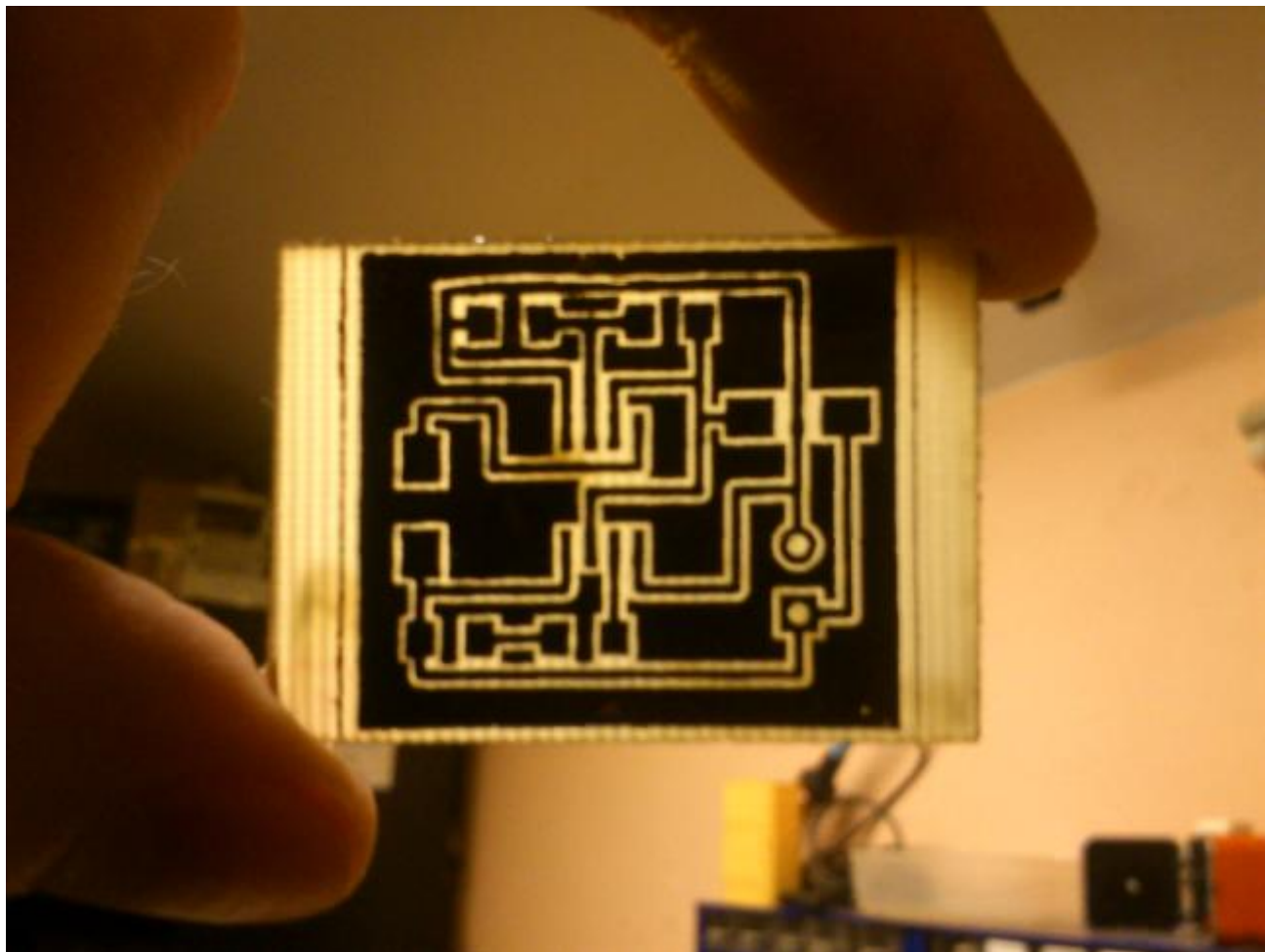


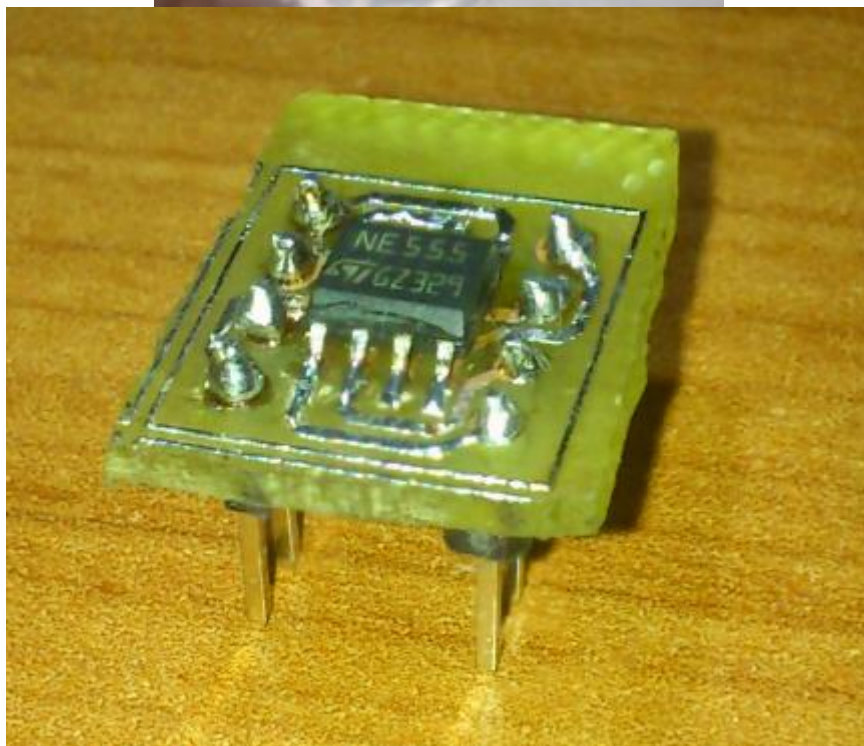
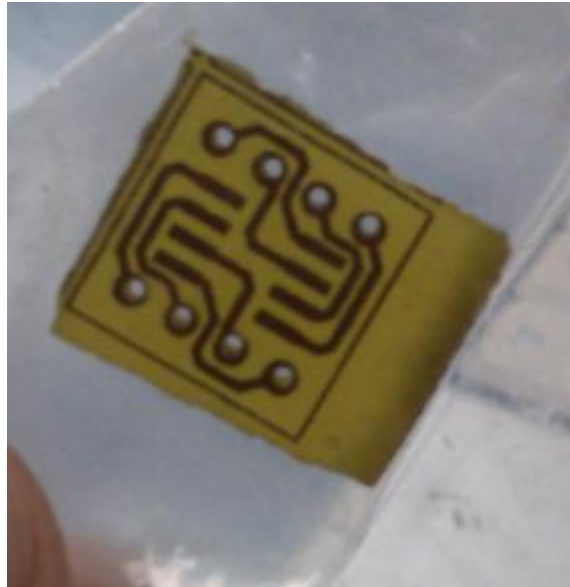
I was mostly using 1206 footprints as most parts will fit this size and it's still possible to comfortably route between legs. 0805 is also quite universal if you design PCB. For capacitors i've used "C 6032" footprint just because i've had some slightly bigger caps at the hand, but it can also take much smaller capacitors, when populated by hand.

Circuit is quite simple and it's meant just for learning of SMD soldering. It's basic 555 astable multivibrator with led and current limiting resistor:



[http://www.ohmslawcalculator.com/555\\_astable.php](http://www.ohmslawcalculator.com/555_astable.php)





From:

<https://wiki.spoje.net/> - **SPOJE.NET**

Permanent link:

[https://wiki.spoje.net/doku.php/howto/electro/smd\\_beginners](https://wiki.spoje.net/doku.php/howto/electro/smd_beginners)

Last update: **2016/10/29 23:05**

